

FINGERPRINT LOCK



Fingerprint



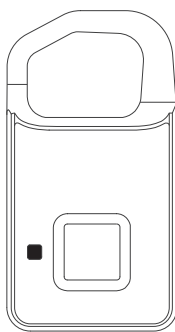
Stand-by
Time 6 Month



0.5s Unlock



Security



I .USB Interface:

The product is charged by USB.
Please fully charge the product
for the first time.



Components:

- 1.USB Port
- 2.Fingerprint Reader
- 3.LED Light
- 4.Lock Beam

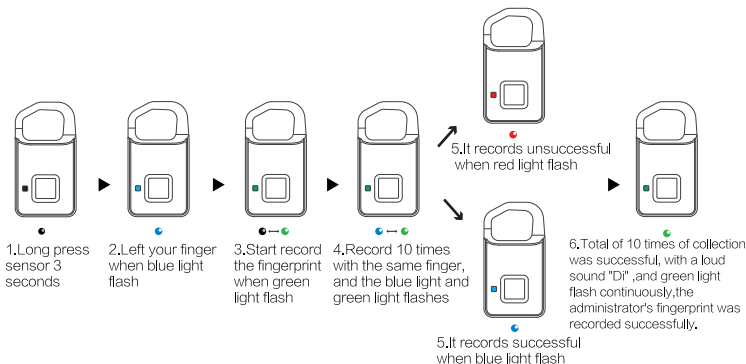
II .Indicator

Use 3-color indicator. Different indicator represents
different devices and status.

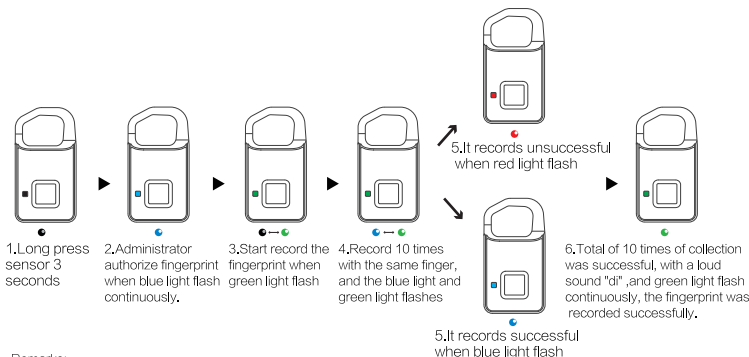
Please check the details as below chart:

Indicator status	Function
Low power	Red light flash
Charging	Red light always on
Full charged	Lights off
Green light flash	Fingerprint collection mode
Green light always on	Successful to collect fingerprint
Blue light always on	Administrator fingerprint authorization
Green light flashes fast	Unlocked successfully
Red light always on	Delete fingerprint mode
Red light flash	Failed to collect fingerprint

III .Description Of First Administrator' s Fingerprint Record



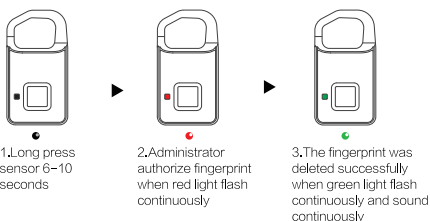
IV .Number 2 to 10 Fingerprint Recording Instructions



Remarks:

1. The first and second fingerprints are the administrator fingerprint by default.
2. Collecting the second to tenth fingerprints requires administrator fingerprint authorization.

V .Description Of Delete Fingerprint



Remarks:

Only the administrator can delete the fingerprint and delete all the fingerprints at once.

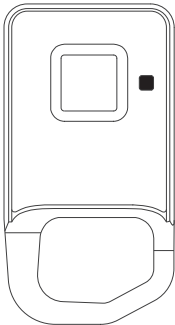
VI .Specifications

Support 360 degree angel fingerprint recognize
Resolution: 508DPI
ESD: +/-12kV air, +/-8kV contact
FRR: <1%
FAR: <0.002%
Recognize time: <300ms
Battery: 3.7V 80mAh
Charger: 5V 200MA

VII .Low voltage

When the voltage $\leq 3.5V$, the red indicator flash fast for 15s. If keep in the status of low batter, it will alarming per minute.

指纹锁



一、USB接口：

设备通过数据线连接USB进行充电。（首次使用前请先给设备充满电。）



部件识别：

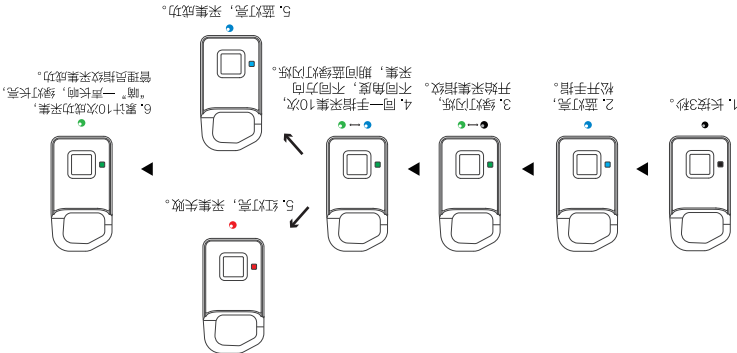
- 1.USB接口
- 2.指纹采集器
- 3.LED指示灯
- 4.锁梁

二、指示灯

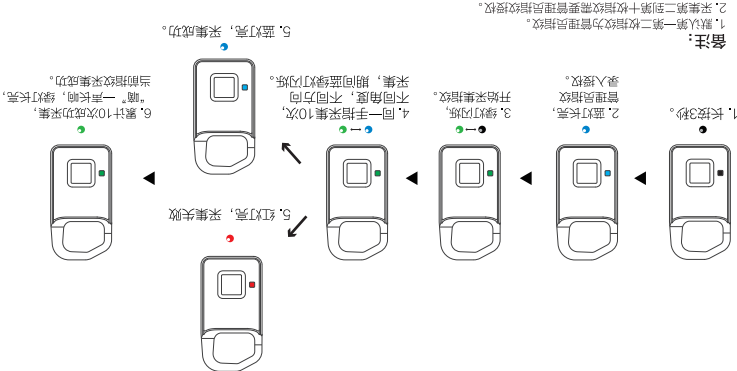
采用3色指示灯，指示灯不同颜色，不同状态代表设备不同状态。详情见下表：

状态	指示灯状态
电量低	红灯闪烁
充电中	红灯长亮
充满电	灯灭
指纹采集模式	绿灯闪烁
指纹采集成功	绿灯长亮
管理员指纹授权	蓝灯长亮
解锁成功	绿灯快速闪烁
清除所有指纹模式	红灯长亮
指纹采集失败	红灯闪烁

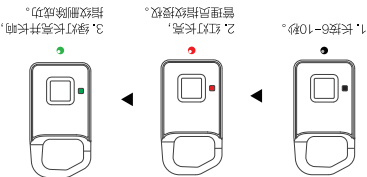
三、首次（管理员）指纹录入说明



四、第二个到第十个指纹录入说明



五、删除指纹说明



备注：

只有管理员才能删除指纹，并且是一次性删除全部指纹。

七、低压

当电压等于或低于 3.5V 时红色指示灯会快闪 15 秒；如一直处于低电状态，每隔一分钟，就报警一次。

六、规格参数

支持360°任意方向按压式指纹识别；
分辨率508DPI；
ESD：+/-12kV空气，+/-8kV接触；
FRR：<1%；
FAR：<0.002%；
识别时间：<300ms；
电池容量：3.7V 80mAh
充电电压：5V 200mA